

Bear Lake Section

This section comprises Bear Lake, the Bear Lake Valley, and dry hillsides and ridges to the east of the Lake. Bear Lake drains through Bear River, which is eventually a tributary of Great Salt Lake. Elevations range from 1800–2400 m (5900–7800 ft).

Precipitation ranges from 40–100 cm (16 to 40 in) annually with most occurring during the fall, winter and spring. Precipitation occurs mostly as snow above 1800 m (6000 ft). Summers are dry with low humidity. Temperature averages 1–9°C (34–48°F). The growing season ranges from 50–180 days.

Livestock grazing, agriculture, and recreation are the primary land uses.

Table 1. Bear Lake land use and land ownership.

Land use	Area (ha)	Area (ac)	Percent
Dryland Agriculture	76,733	189,611	9
Irrigated–Gravity Flow	128,657	317,919	14
Irrigated–Sprinkler	162,328	401,121	18
Rangeland	305,917	755,937	34
Riparian	79,679	196,891	9
Urban	3470	8575	<1
Water	136,001	336,066	15
Total	892,785	2,206,120	100
Land ownership	Area (ha)	Area (ac)	Percent
USDI Bureau of Land Management	130,630	322,794	15
Open water	141,340	349,260	16
Private	533,317	1,317,856	60
State of Idaho	18,557	45,855	2
USDI Fish and Wildlife Service	68,694	169,747	8
Total	892,539	2,205,511	100

Species of Greatest Conservation Need in the Bear Lake

Fishes

Bonneville Cutthroat Trout *Oncorhynchus clarkii utah*^a

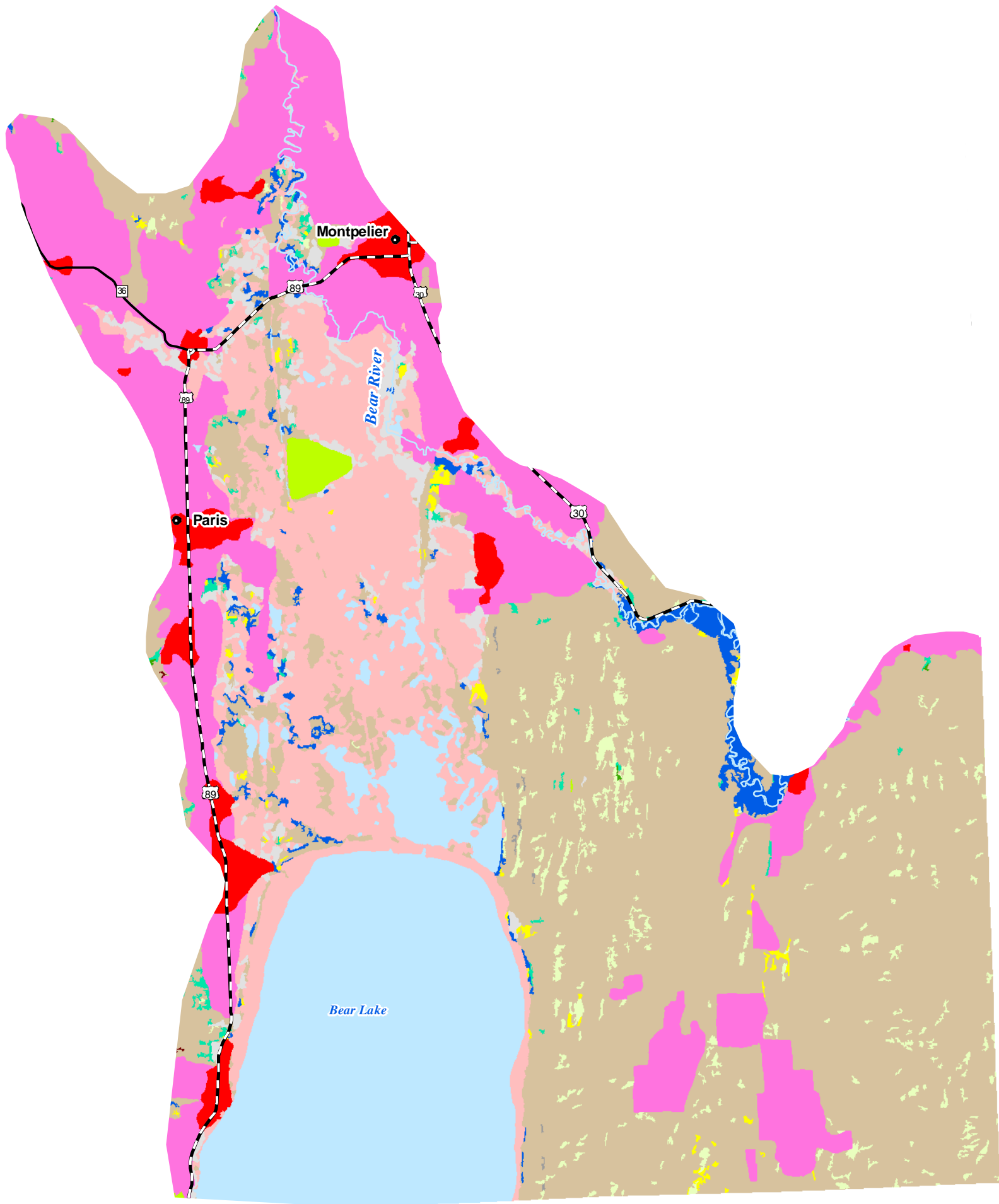
Bear Lake Whitefish *Prosopium abyssicola*^a

Bonneville Cisco *Prosopium gemmifer*^a

Bonneville Whitefish *Prosopium spilonotus*^a

Bear Lake Sculpin *Cottus extensus*^a

Bear Lake Ecological Section Habitats



Habitats

- | | |
|----------------------------|-------------------------------------|
| Alpine | Southern Woodland |
| Arableland | Southern Xeric Shrubland and Steppe |
| Dune, Canyon, and Rockland | Subalpine Forest |
| Mesic Deciduous Shrubland | Subalpine Grassland |
| Non-native Herbaceous | Upland Deciduous Forest |
| Open Water | Urban |
| Riparian Woodland | |
| Southern Wetland | |

Town Population

- 0 - 20,000
- 20,001 - 200,000

Highways

- Interstate
- U.S. Highway
- State Route

I D A H O



25 July 2005
Idaho Conservation Data Center, Idaho Department of Fish and Game.

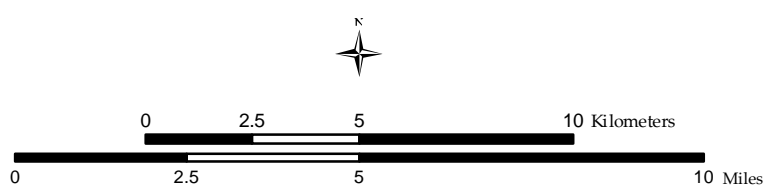


Figure 24. Bear Lake habitats.

Amphibians

Northern Leopard Frog *Rana pipiens*

Birds

Trumpeter Swan *Cygnus buccinator*^a
Northern Pintail *Anas acuta*
Greater Sage–Grouse *Centrocercus urophasianus*
Sharp–tailed Grouse *Tympanuchus phasianellus*
Western Grebe *Aechmophorus occidentalis*^a
Clark’s Grebe *Aechmophorus clarkii*^a
American White Pelican *Pelecanus erythrorhynchos*^a
Great Egret *Ardea alba*
Snowy Egret *Egretta thula*^a
Cattle Egret *Bubulcus ibis*
Black–crowned Night–Heron *Nycticorax nycticorax*
White–faced Ibis *Plegadis chihl*^a
Bald Eagle *Haliaeetus leucocephalus*
Swainson’s Hawk *Buteo swainsoni*
Ferruginous Hawk *Buteo regalis*
Merlin *Falco columbarius*
Peregrine Falcon *Falco peregrinus*
Sandhill Crane *Grus canadensis*
Black–necked Stilt *Himantopus mexicanus*^a
American Avocet *Recurvirostra americana*^a
Long–billed Curlew *Numenius americanus*
Wilson’s Phalarope *Phalaropus tricolor*^a
Franklin’s Gull *Larus pipixcan*^a
California Gull *Larus californicus*
Caspian Tern *Sterna caspia*^a
Forster’s Tern *Sterna forsteri*^a
Black Tern *Chlidonias niger*^a
Burrowing Owl *Athene cunicularia*
Short–eared Owl *Asio flammeus*
Virginia’s Warbler *Vermivora virginiae*
Brewer’s Sparrow *Spizella breweri*
Grasshopper Sparrow *Ammodramus savannarum*
Lesser Goldfinch *Carduelis psaltria*

Mammals

Merriam's Shrew *Sorex merriami*
Townsend's Big–eared Bat *Corynorhinus townsendii*
Wyoming Ground Squirrel *Spermophilus elegans*
Rock Squirrel *Spermophilus variegatus*
Idaho Pocket Gopher *Thomomys idahoensis*

Gastropods

Green River Pebblesnail *Fluminicola coloradoensis*
 Bear Lake Springsnail *Pyrgulopsis pilsbryana*^a

^a Species for which the Bear Lake represents a significant portion of their Idaho range.

Habitats in the Bear Lake

Table 2. Bear Lake habitats.

Habitat	Area (km ²)	Area (ac)	Percent
Urban	22	5592	2
Arableland	182	44,984	21
Non-native Herbaceous	8	2023	1
Southern Xeric Shrubland and Steppe	355	87,672	40
Subalpine Grassland	16	3782	2
Alpine	22	5464	2
Open Water	146	36,147	16
Southern Wetland	123	30,377	14
Riparian Woodland	13	3342	1
Total	887	219,383	100

Priority Habitats and Associated Vertebrate Species in the Bear Lake

Arableland

Fishes

Bonneville Cutthroat Trout *Oncorhynchus clarkii utah*

Amphibians

Northern Leopard Frog *Rana pipiens*

Birds

Northern Pintail *Anas acuta*

Greater Sage-Grouse *Centrocercus urophasianus*

Sharp-tailed Grouse *Tympanuchus phasianellus*

Black-crowned Night-Heron *Nycticorax nycticorax*

White-faced Ibis *Plegadis chihi*

Merlin *Falco columbarius*

Long-billed Curlew *Numenius americanus*

Franklin's Gull *Larus pipixcan*

California Gull *Larus californicus*

Burrowing Owl *Athene cunicularia*

Mammals

Wyoming Ground Squirrel *Spermophilus elegans*

Southern Xeric Shrubland and Steppe

Fishes

Bear Lake Whitefish *Prosopium abyssicola*
Bonneville Cisco *Prosopium gemmifer*
Bonneville Whitefish *Prosopium spilonotus*
Bear Lake Sculpin *Cottus extensus*

Amphibians

Northern Leopard Frog *Rana pipiens*

Birds

Greater Sage–Grouse *Centrocercus urophasianus*
Sharp–tailed Grouse *Tympanuchus phasianellus*
Merlin *Falco columbarius*
Peregrine Falcon *Falco peregrinus*
Long–billed Curlew *Numenius americanus*
Burrowing Owl *Athene cunicularia*
Grasshopper Sparrow *Ammodramus savannarum*
Lesser Goldfinch *Carduelis psaltria*

Mammals

Merriam's Shrew *Sorex merriami*
Townsend's Big–eared Bat *Corynorhinus townsendii*
Wyoming Ground Squirrel *Spermophilus elegans*
Rock Squirrel *Spermophilus variegatus*
Idaho Pocket Gopher *Thomomys idahoensis*

Open Water

Fishes

Bear Lake Whitefish *Prosopium abyssicola*
Bonneville Cisco *Prosopium gemmifer*
Bonneville Whitefish *Prosopium spilonotus*
Bear Lake Sculpin *Cottus extensus*

Birds

Trumpeter Swan *Cygnus buccinator*
Northern Pintail *Anas acuta*
Western Grebe *Aechmophorus occidentalis*
Clark's Grebe *Aechmophorus clarkii*
American White Pelican *Pelecanus erythrorhynchos*
Snowy Egret *Egretta thula*
Black–crowned Night–Heron *Nycticorax nycticorax*
White–faced Ibis *Plegadis chihi*

Black-necked Stilt *Himantopus mexicanus*
American Avocet *Recurvirostra americana*
Wilson's Phalarope *Phalaropus tricolor*
Franklin's Gull *Larus pipixcan*
California Gull *Larus californicus*
Caspian Tern *Sterna caspia*
Forster's Tern *Sterna forsteri*
Black Tern *Chlidonias niger*

Mammals

Townsend's Big-eared Bat *Corynorhinus townsendii*

Southern Wetland

Fishes

Bonneville Cutthroat Trout *Oncorhynchus clarkii utah*

Amphibians

Northern Leopard Frog *Rana pipiens*

Birds

Trumpeter Swan *Cygnus buccinator*
Northern Pintail *Anas acuta*
Western Grebe *Aechmophorus occidentalis*
Clark's Grebe *Aechmophorus clarkii*
American White Pelican *Pelecanus erythrorhynchos*
Snowy Egret *Egretta thula*
Black-crowned Night-Heron *Nycticorax nycticorax*
White-faced Ibis *Plegadis chihi*
Bald Eagle *Haliaeetus leucocephalus*
Merlin *Falco columbarius*
Peregrine Falcon *Falco peregrinus*
Black-necked Stilt *Himantopus mexicanus*
American Avocet *Recurvirostra americana*
Wilson's Phalarope *Phalaropus tricolor*
Franklin's Gull *Larus pipixcan*
California Gull *Larus californicus*
Caspian Tern *Sterna caspia*
Forster's Tern *Sterna forsteri*
Black Tern *Chlidonias niger*
Lesser Goldfinch *Carduelis psaltria*

Mammals

Townsend's Big-eared Bat *Corynorhinus townsendii*