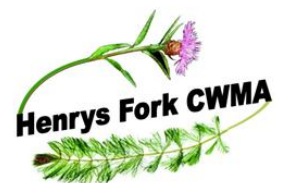


**2009  
End of Year  
Report**

# Henrys Fork Cooperative Weed Management Area

“When weeding, the best way to make sure you are removing a weed and not a valuable plant is to pull on it. If it comes out of the ground easily, it is a valuable plant.”



## Table of Contents

<b>Introduction</b> .....	2
<b>Project Progress</b> .....	2
Priority 1 (Island Park/North Fork Initiative) .....	2
Priority 2 (Chester Wetlands) .....	2
Priority 3 (Fremont County Bio Control).....	<b>Error! Bookmark not defined.</b>
Priority 4 (St. Anthony Sand Dunes).....	<b>Error! Bookmark not defined.</b>
Priority 5 (Bitch Creek Spray Day).....	<b>Error! Bookmark not defined.</b>
Priority 6 (Sheridan Creek Riparian).....	3
Priority 7 ( Parker Headquarters/ Crapo Farms) .....	4
Priority 8 (Henrys Fork River Access Week Inventory) .....	4
Priority 9 ( Pamphlets/Posters).....	4
<b>Goals for 2010</b> .....	5
<b>Contributions to the CWMA</b> .....	5
<b>Appendix A: Steering Committee</b> .....	6
<b>Appendix B: AOP Accomplishments</b> .....	7
<b>Appendix C: Area Discription</b> .....	8

## 2009 End of Year Report

The Henry's Fork Cooperative Weed Management Area (HFCWMA) is a partnership formed to manage, contain, control, and eradicate noxious weeds in Fremont County, Idaho, the southwest portion of Yellowstone National Park and a portion of Ashton Ranger District within Teton County, Wyoming. The HFCWMA covers 1.5 million acres that vary from desert to high alpine forest. Only 31% of the HFCWMA area is in private ownership.

The HFCWMA uses integrated weed management techniques including biological, mechanical, and chemical methods to contain, control and eradicate noxious weeds. The HFCWMA Steering Committee includes: Fremont County, Targhee National Forest, Yellowstone National Park, Idaho Department of Lands, Idaho Department of Fish and Game, Idaho Department of Transportation, Bureau of Land management, Teton County Wyoming, Natural Resource and Conservation Service and several private land owners.

During 2009, the HFCWMA steering committee met four times. They continued their several initiatives aimed at increasing landowner participation in weed control within the area, and pushed their aggressive attack on Leafy spurge and Spotted Knapweed.

### Project Progress

Nine projects were implemented during 2009. Projects included Herbicide Treatments, Biological Treatments, Mapping, information projects and other CWMA projects with alternate funding. Some of the projects have been underway for several years and are yielding high success.

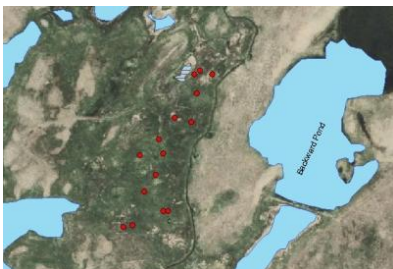
### Island Park/North Fork Initiative



Bryce Fowlers sprays landowner's field for leafy spurge.

The Island Park/North Fork Initiative enabled landowners to spray pastures and rangeland infected with Leafy Spurge, Canada thistle, and Spotted Knapweed. Most land owners who used the cost share program took the county labor option, rather than doing it themselves, which made for a busy summer. The work that Fremont County Weed Department has done on this project in the past has helped set the ground work for next year. The county already has people wanting their private property sprayed for weeds next year, because of the impacts they've seen. The project is also helping cleanup the landscape and bring back native vegetation. The people who have participated in this project are dedicated to weed control and will continue to work with the weed programs designed for their property. Overall, this project gets better each year as it grows.

### Chester Wetlands



Area view of Chester wetlands bio release sites.

The 2009 Chester Wetlands Project was initiated to target thistle species that border riparian corridors. Before Idaho Fish and Game purchased the Chester Wetlands, heavy grazing resulted in the release of several noxious weed species throughout the 1500 acre complex. With the discovery of Ute Ladies Tresses, a threatened orchid, weed management has been difficult at times. No herbicide can be used in these orchid sites which are in close proximity to water and thistles. Therefore, an ongoing effort to place bio control in these orchid sites took place in the spring of 2009. Two colonies of *Urophora cardui* were donated by Nez Perce bio control and were placed in March. Sixteen colonies of *Urophora cardui* were placed in late spring and eight colonies of *Ceutorhynchus litura* were placed in late summer.

Milestone and 2-4-D were applied on the 1500 acre complex with the help of Idaho Fish and Game, Fremont County, Madison County, and BLM. Approximately 430 acres were treated. Plans for 2010 are to continue bio control and herbicide applications.

## Fremont County Biological Control

The Fremont County Bio project only able to receive 11 colonies of *Cyphocleonus achates*. They were released on a large infestation of Spotted knapweed above St. Anthony.

## St. Anthony Sand Dunes

The sand dune mapping day was a huge success. Many different agencies, counties, and a few landowners showed up. Due to the high turnout of cooperative partners their efforts were able to cover the whole project area in one day. This project would have taken Fremont County weeks to do alone. No Rush skeleton weed was found on the site, however other noxious weeds (Spotted knapweed, Plumeless thistle) were found, mapped, and treated at a later date. Thanks to the cooperative support from the CWMA this project was fast and effective on this Fremont County terrain. This project needs to make note that because the herbicide was no longer needed for this project, the funding that was provided for the Sand Dune Herbicide was transferred to the Chester Wetlands Project.



Safety Flags were purchased for the safety of the people using ATV's

## Bitch Creek Spray Day

The Bitch Creek Project was another big success. The CWMA had a big turnout for this work day, seventeen participants representing private landowners, surrounding counties, BLM, Forest Service, and Fish and Game came to support the spray day which enabled the project to cover all the different property owners along this stretch of land. After several years of this project, the majority of the Leafy Spurge has left and native species have regained the complete edge. This project is one of the CWMA's biggest success. The project goal was to control and contain Leafy Spurge in the area near Bitch Creek, which borders Fremont and Teton Counties. Most of the land treated was privately owned pasture recently taken out of CRP, land bordering the forest, roadsides, and land along the Bitch Creek drainage. Due to the successful control this project has had during the previous two years we were able to expand the scope of this project from Hatches Corner and Felt to the Fremont County line. An estimated 240 acres of Leafy Spurge was treated as well as 60 acres of Musk Thistle and 2 acres of Spotted Knapweed.



Cooperative spray crews unload for the Bitch Creek Spray Day

## Sheridan Creek Riparian

This project involved both herbicide treatment and bio-control releases on Harriman State Park. The main target weed was Canada thistle, but plumeless thistle and spotted knapweed were also treated with herbicide. Milestone herbicide was used to treat 8 acres of thistle at the Sheridan Creek segment of Harriman State Park, and an additional 30 acres was treated in the Ranch section of the Park. Bio-control releases were started in the riparian areas along the Henry's Fork. At seven different sites, a total of



One of the Sheridan Creek Riparian bio release sites.

2,300 *Urophora cardui* were released, and 1,300 *Ceuthorrhynchus litura* were released. The bio-control project was not completed as planned due to problems encountered with the bio-control supplier. Revisiting release sites in August revealed the gall flies rapidly established at the release sites. Both the herbicide treatments and bio-control releases are anticipated to continue in 2010.

## Parker headquarters/Crapo Farms

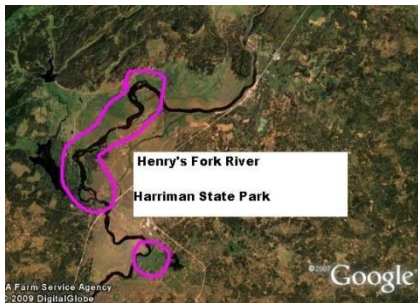
The Parker / Crapo project occurred on Idaho Fish & Game land and Crapo Farms northwest of Parker. Spotted Knapweed has become a major concern on the desert portion of the Sand Creek Wildlife Management Area. Adjoining agriculture fields contained monocultures of Spotted Knapweed which were spreading onto the desert with the aid of wind and vehicles. Early in the summer Fremont County and Idaho Fish & Game conducted a weed mapping day at the project to determine the total affected area. Later in the summer with the help of Fish & Game employees, Fremont County, and Madison County, 365 acres were treated. Boomless ATV sprayers and backpack sprayers were the primary equipment used on the project. Future plans for the surrounding area will include more ground spraying and biological releases through a Landowner Incentive Project (LIP) federal grant.



Spotted Knapweed on Crapo's Farm

## Henry's Fork River Access

The Henry's Fork River Access inventory project was about 75% completed in 2009; the remaining sites will be inventoried in summer 2010. The target area was inventoried at 33 public river access sites, and noxious weeds were found at most sites. The weeds commonly encountered included Canada thistle, Plumeless thistle, spotted knapweed, white bryony, leafy spurge, and Hoary allysum. Dyer's woad was also found at one site near Ashton Dam. Once the inventory has been completed, a summary will be submitted to Fremont County Weed Department and other river access land managers. Grant funds were used to purchase an all purpose GPS unit and herbicide; the work was completed by Henry's Fork Foundation staff/ volunteers. No additional funds are needed to complete the project in 2010.



Area inventoried along the Henry's Fork River

## Pamphlets/Posters

The pamphlets/ posters for the Henry's Fork CWMA will be designed and printed next quarter. Due to time restrains and a busy summer, this project has been pushed back to January/February 2010.

## Goals for 2010

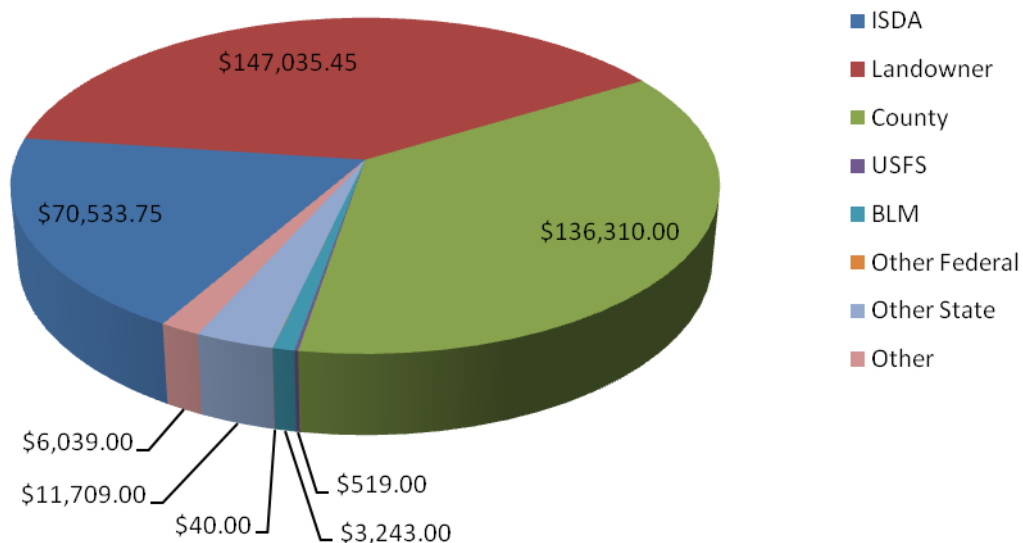
Goals for 2010 include:

- Include Teton and Madison County into the CWMA strategy, change CWMA boundaries, and form new partnerships with Forest Service, Teton Land Trust, Idaho Fish and Game, and the additional counties.
- Expanding the landscape scale special initiatives started in 2009 to treat more acres.
- Initiate cooperative "spray days" and "mapping Days" and "Bio-control collection days"
- Launch a CWMA wide information and education initiative. Including a trailer, brochures, and high school lesson plans.

## Contributions to the CWMA

Fremont County as well as state and federal land managing agencies within the HFCWMA annually set budgets for integrated noxious weed control programs. Other HFCWMA partners provide technical assistance, equipment, services, and dollars in support of integrated noxious weed programs. Grant dollars received from the Idaho Department of Agriculture (ISDA) totaling \$70,533.75 have been matched with local cash and services totaling \$375,429.20. Collectively, these partners provide the resources needed to implement the programs of the HFCWMA. During 2009, a total of \$304,895.45 in cash and in-kind services were contributed in direct support of HFCWMA project implementation.

### 2009 Henrys Fork CWMA Sources of Contribution



## Appendix A: Steering Committee

Henrys Fork CWMA Steering Committee List							
Name	Title	Address	City	State	Zip Code	Phone	email
Bryce Fowler	Chairman	49 West 1st North	St. Anthony	ID	83445	(208) 624-3102	bfowler@co.fremont.id.us
Kyle Moore	Vice - Chairman	499 North 2400 East	St. Anthony	ID	83445	(208) 652-7442	kdmooore@fs.fed.us
Tammy Egbert	Secretary	302 Profit Street	Rexburg	ID	83440	(208) 356-5213	tammy.egbert@id.usda.gov
Adrienne Keller	US Forest Service	499 North 2400 East	St. Anthony	ID	83445	(208) 652-7442	akkeller@fs.ded.us
Craig McClure	National Parks Service	Yellowstone Nat. Park	Yellowstone Park	WY	82190	(307) 344-2168	craig_mcclure@nps.gov
Dustin Cureton	Idaho Fish and Game	2885 West River Road	St. Anthony	ID	83445	(208) 624-7065	dcureton@idfg.idaho.gov
Jodi Vincent	Idaho Parks and Rec.	3489 Green Canyon Rd	Island Park	ID	83429	(208) 558-7368	jvincent@idpr.idaho.gov
Josh Rydalch	Idaho Fish and Game	2885 West River Road	St. Anthony	ID	83445	(208) 624-7065	jrydalch@idfg.idaho.gov
Joshua Gibbs	Bureau of Land Management	1405 Hollipark Drive	Idaho Falls	ID	83401	(208) 524-7553	joshua_gibbs@blm.gov
Keith Hobbs	Idaho Parks and Rec.	3489 Green Canyon Rd	Island Park	ID	83429	(208) 558-7368	khobbs@IDPR.state.id.us
Kim Ragotzkie	Henrys Fork Foundation	604 Main St	Ashton	ID	83420	(208) 652-3567	kimr@henrysfork.org
Kirk Finn	Idaho Transportation Dept.	206 N. Yellowstone Ave.	Rigby	ID	83442	(208) 745-7781	kirk.finn@itd.idaho.gov
Mark Arana	US Bureau of Rec	1359 Hansen Ave.	Burley	ID	83318	(208) 678-7206	marana@pn.usbr.gov
Mark Harbaugh	Landowner	3618 Highway 32	Ashton	ID	83420	(208) 652-7070	goatmountainranch@gmail.com
Paul Romrell	Fremont Co. Commision	151 West 1st North	St. Anthony	ID	83445	(208) 624-4304	promrell@co.fremont.id.us
Scott Minnie	Bureau of Land Mgmt.	1405 Hollipark Drive	Idaho Falls	ID	83401	(208) 524-7553	scott_minnie@blm.gov
Steve Smart	NRCS RC&D coordinator	302 Profit Street	Rexburg	ID	83440	(208) 356-5213	steve.smart@id.usda.gov

## Appendix B: AOP Accomplishments

Biological Releases	
Weed Species	Acres treated
Canada thistle	165
Spotted Knapweed	55

Herbicide Treatment	
Canada thistle	443
Leafy Spurge	591
Musk Thistle	62
Perennial Sowthistle	25
Puncturevine	0.1
Spotted Knapweed	592
Yellow Toadflax	1
Houndstongue	1
Plumeless Thistle	202
Purple Loosestrife	0.1

Noxious Weeds Mapped	
Weed Species	Acres treated
Dyer's Woad	2
Hoary Alyssum	2
Canada thistle	15
Diffuse Knapweed	1
Field Bindweed	1
Leafy Spurge	5
Plumeless Thistle	6
Spotted Knapweed	27
Yellow Toadflax	9
Houndstongue	5
White Bryony	3

Public Contacts	11681
-----------------	-------



## Appendix C: Area Description

The HFCWMA includes all the land in Fremont County Idaho plus the south west portion of Yellowstone National Park that drains into the Henrys Fork, (the Bechler Subdistrict) and that portion of Teton County Wyoming that lies within the Ashton District of the Caribou-Targhee National Forest. The HFCWMA comprises 1.5 Million acres of which twenty five percent is in private ownership. (See attached Map)

