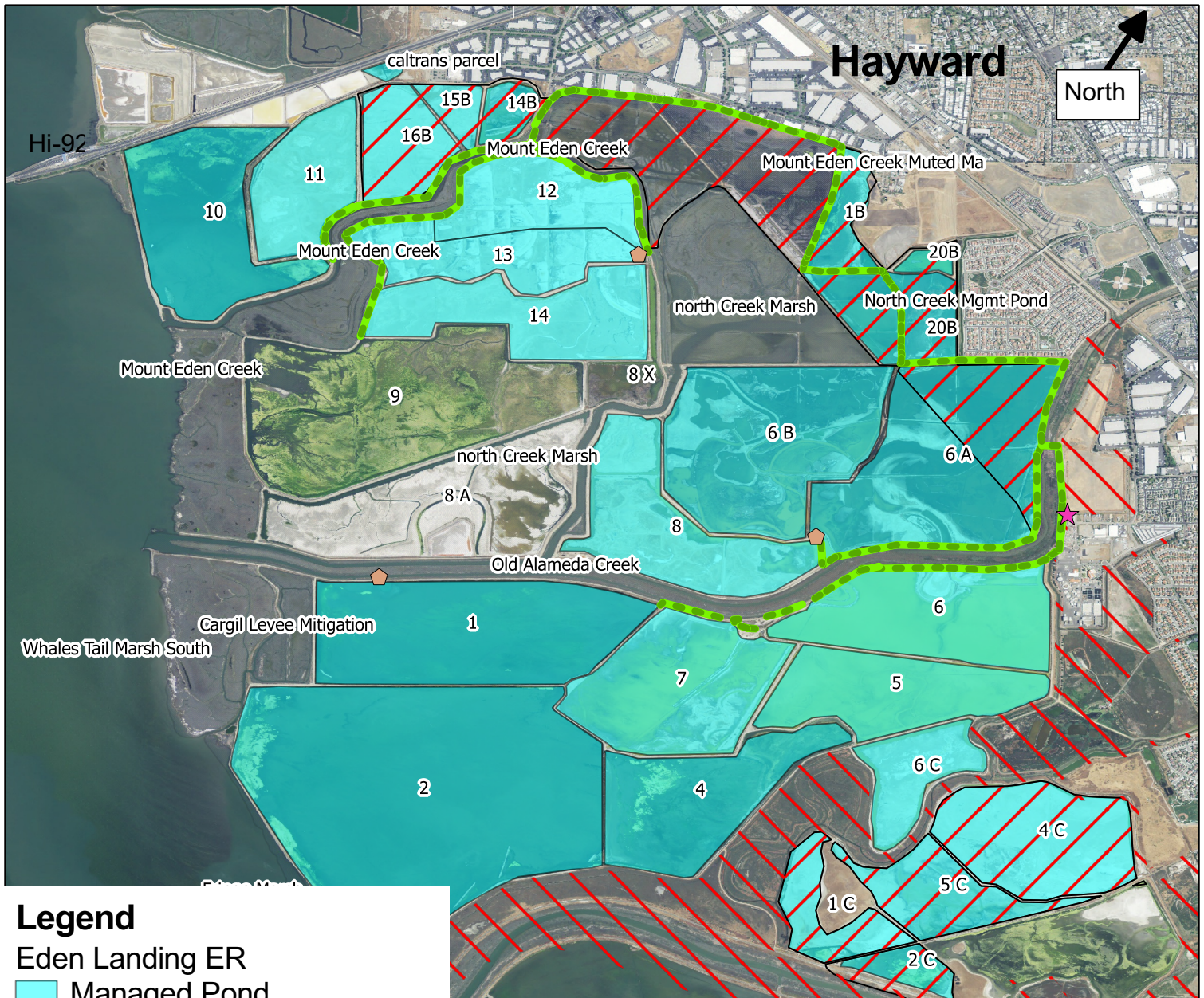




California Department of Fish & Game Eden Landing Ecological Reserve 2011-12 Waterfowl Hunting Season

Contact DFG: John Krause
jkrause@dfg.ca.gov or
415-454-8050

Hunters must check in/out for access (waterfowl hunting only) on the following dates:
2011: Sunday, Nov. 20; Saturday, Dec. 3; Thursday, Dec. 8; Tuesday, Dec. 13; Saturday, Dec. 17
2012: Saturday, Jan. 7; Thursday, Jan. 12; Tuesday, Jan. 17; Saturday, Jan. 28



Legend

Eden Landing ER

Managed Pond

TIDAL

Check Station (in/out)

Pump Station

Access Roads [vehicles]

(graveled)

Closed Zone

No Hunting

Alameda County Lands

No Hunting, No Trespassing

A small boat, kayak or floatation device is recommended to access blinds, ponds, sloughs. A dog or boat/kayak/floatation/etc. for retrieval is strongly recommended. SHOOT ONLY WHAT YOU CAN RETRIEVE!

AREA RULES (include, but are not limited to):

*Vehicle access is limited to graveled roads. Do not drive past orange cones. Do not block roads, park to side only. Bicycles not allowed.

*A 25-shell limit in the field (non-toxic shot only = no lead shells). Blind material, trash & spent shells shall be removed daily.

*East/Southern levees of Ponds 5, 6, 6C, adjacent to Alameda County Lands are closed to hunting (Do not hunt on those levees, hunt only in open pond areas). The bayfront levee of Pond 10 and parts North of PG&E Transmission Lines/Towers is closed to hunting.

*Disabled Hunters (max.4) may use 1 blind in Pond 5C (not free range).

Reserve prior or at check in

Failure to comply with all area rules, regulations and/or direction from DFG wardens/staff/volunteers is grounds for citation and/or ejection.

Eden Landing Ecological Reserve: Information, Area Rules, Regulations

Contact: John Krause, CDFG Reserve Manager/Wildlife Biologist 415-454-8050
jkrause@dfg.ca.gov

What is the Eden Landing Ecological Reserve and what are the management goals?

The Department of Fish & Game (DFG) owns and manages the Eden Landing Ecological Reserve (ELER), approximately 6400 acres along the east San Francisco Bay shoreline adjacent to Hayward and Union City. The area was formerly owned and managed by Cargill Salt Co. as solar salt production facilities. In 1996, 835-acres were acquired; construction activities were completed on the 835-ac project, while passive restoration and management continues. In 2003, the State and federal government, with contributions from private foundations, purchased 15,100-acres of salt ponds and other lands from Cargill, approximately 5500 acres of which are part of ELER. Funds for the acquisition and restoration were provided by the Wildlife Conservation Board, including bond funds (Proposition 50).

The area is managed for resident and migratory waterbirds and tidal marsh habitats and species. The long-term goals are to restore and enhance wetland habitats for migratory birds and threatened and endangered species, provide for flood management, and provide wildlife-oriented public access and recreation opportunities. A segment of the Bay Trail opened in 2008 which connects points north of HI-92 and west of Eden Shores development to the reserve. To access the Eden Landing Bay Trail, take the Clawiter Rd/Eden Landing Rd. exit from Highway 92, and go south of the highway on Eden Landing Rd. to the end, near the intersection of Arden Rd.

Construction activities are underway as part of Phase One of the South Bay Salt Ponds Restoration Project (www.southbayrestoration.org). Ponds 8A, 9 and 8X were restored to full tidal action in November, 2011. Ponds 12 and 13 will be reconfigured for intensive management to benefit foraging waterbirds and construction is expected to occur in 2012 through 2013.

One of the management goals for this property includes providing controlled public access opportunities, including waterfowl hunting. DFG's ponds will be open for the special waterfowl hunts on dates designated each year. See also Area Rules, Regulations for ELER for details.

How do I get to the Eden Landing Ecological Reserve?

ELER is in the City of Hayward, south of Hi-way 92, west of I-880. Hunting access to ELER is from Veasy Street, off of Horner St. in Union City next to Old Alameda Creek. Hunt Directions:

Take I-880 to Alvarado Blvd. exit, go west on Alvarado from I-880 approximately 2 miles, then turn right onto Union City Blvd, then less than 0.5 mile turn left onto Bettencourt Road, then left on Whipple Road. Turn right on Horner Street and then right on Veasy Street to the yellow gate.

Year round access to the Eden Landing Bay Trail is open. Take the Clawiter Rd/Eden Landing Rd. exit from Highway 92, go south of highway on Eden Landing Rd. to the end, near Arden Rd.

What's new at Eden Landing Ecological Reserve for the 2011-12 Season?

Two consecutive years of construction activities have been completed, implementing Phase One of the South Bay Salt Pond restoration project. This includes regrading levees and levee lowering and breaches around Ponds 8A, 9 and 8X and reconstruction of levees around Ponds 14, 13, 12 and 10. This work facilitated full tidal restoration of Ponds 8A, 9 and 8X for tidal salt marsh and

reconfiguration of Ponds 12, 13 for intensive management of shallow water for waterbird foraging habitat, as well as continued seasonal management of Pond 14. Ponds 12, 13 and 14 will be managed in 2011-12 similar to previous years and provide overwintering waterfowl habitat.

Additional areas have been designated and signed as closed zones, to address on-going hunter trespass and related management issues. The eastern levee of Ponds 5, 6, 6C, adjacent to Alameda County land and the bayfront levee of Pond 10 is closed for hunting from the levee. No hunting is allowed north of the PG&E Transmission Towers/Lines in Pond 10 and Pond 6A. Blinds and hunting within Ponds 5, 6, 6C and 10 remain open, as well as other levees where DFG property is on both sides of the levee, except as restricted in Closed Zone area. Vehicular access from Veasy St. to ponds north and south of Old Alameda Creek is open only on graveled levees, and additional blinds have been constructed or maintained in the ponds. Boat launching and parking areas are improved.

Area Rules in 2011-12 include a 25-shell limit in the field (on your person); you are allowed to retrieve more shells from your vehicle or leave the site to purchase more and return. This is similar to existing National Wildlife Refuge rules and how similar hunt programs are managed. This restriction is intended to encourage a high-quality hunting experience, and discourage excessive shooting, which affects nearby hunters and neighbor relations. All trash, including shotshell hulls must be removed daily.

A blind in Pond 5C may be reserved for disabled/mobility-impaired hunters with appropriate ID, by special arrangement with DFG prior to hunt dates or at check in, as available. Disabled hunters must check in with DFG at the Veasy St. gate prior to hunting and must check out with DFG after the hunt, as this area requires alternative access arrangements.

When will the entry gate and check station open for hunt days?

The entry gate and check station will typically open at least two hours before shoot time to allow time for hunters to check in, drive/walk to open ponds/levees, set up any decoys, etc.

Are all of the salt ponds and marsh areas open for the hunt? What restrictions are in place?

DFG is opening only certain areas within ELER to waterfowl hunting. Hunting access for waterfowl species is restricted at the salt ponds owned by DFG and will be open for the special waterfowl hunts only on the dates designated. Access and hunting is only allowed during those dates. The property boundary of the ELER is posted. The eastern-most marsh lands adjacent to the Alameda Creek Federal Flood Control Channel ("J" Ponds) and east of DFG's ponds are owned by Alameda County. The ponds south of Alameda Creek are owned by the U.S. Fish and Wildlife Service and remain under Cargill's management for salt making; these areas should be considered private property. Trespassing is prohibited. A map will be provided on hunt days.

Hunters may possess only approved nontoxic shot (no lead) while in the field. Firearms must be kept unloaded until hunter is within the designated hunt area. A 25-shell limit (on-person) is enforced. Possession of a firearm or accessing the ELER is prohibited, other than a firearm legal for waterfowl hunting on the annual specified dates.

Where can I hunt?

Open Zones for the hunt areas are shown on maps available at check in and Closed Zone areas are posted and are shown on the season's map. Do not trespass or hunt in closed areas; you may retrieve downed birds provided guns are left in the legal hunting area. Closed Zones are designated because of management activities, proximity to homes or trails, access difficulties or they are not suitable habitat for waterfowl or hunting. Do not trespass into the adjacent marsh

areas outside of DFG's property to hunt in marshes, channels and ponds south and east of ELER which are owned and managed by Alameda County. Fremont, Alviso and Ravenswood Ponds that are part of Don Edwards San Francisco Bay National Wildlife Refuge are open to hunting. Contact USFWS for information.

Is permission or check-in necessary for hunting access? What if I'm not hunting?

All access to the property is restricted, no access is allowed anytime without written permission. Permission to access ELER on designated hunt dates is provided by DFG at check-in. A guest may accompany a hunter and must also check in.

Can I use a boat or a dog for hunting purposes?

Yes. Small watercraft are recommended and are best to use to access the ponds. A gas motor is allowed, although caution is suggested as there are unmarked obstacles and shallow pond areas could result in propeller damage. There is one concrete ramp boat launch at ELER on Old Alameda Creek, and launching from levees is permitted for small boats. It is recommended that boats are launched and landed at higher tides for best access conditions. For hunting in ponds, hunters will need to launch boats into ponds off of the levee roads. The use of a dog or a small boat or other floatation device for retrieval purposes is also recommended. Pond depths vary and you will need to portage your small boat over the levees and berms separating the ponds to get to ponds further from the access levees. A boat or a dog for retrieval is highly recommended for ELER, as it may not be safe to enter the ponds and wade in for retrieval due to unmarked hazards such as ditches and channels, and because the pond bottoms are varied and unconsolidated in many areas. Dogs are allowed only for hunting purposes.

Can I get access or hunt prior to the special hunt dates?

No. ELER is closed to public access except for the special hunt dates and use of the Eden Landing Bay Trail and Staging Area along the northern perimeter. Waterfowl species are the only species that can be legally hunted on the ELER. A maximum of 100 hunters will be allowed access on the designated dates. These restrictions are necessary for DFG to provide a controlled access, high-quality waterfowl hunting opportunity, given DFG's staff and funding limitations.

What type of access is allowed?

Drive-on access to ELER will only be allowed on graveled levee roads, as designated. Access within the ponds by boat will be allowed. The areas open for hunting may be accessed by boats and portaging over the levees and berms dividing the ponds, or by walking on levees beyond the open, graveled access levees. No hunting or shotguns are allowed in Closed Zones.

Can I ride ATV's or bicycles in the Eden Landing Ecological Reserve hunt areas?

No. Use of bicycles is prohibited except along the Eden Landing Bay Trail on non-hunt days. You cannot access the property except by on-road motor vehicle along the designated gravel access levees, by launching a boat or by walking on the site. Hunters and guests need to remain on existing, graveled levee roads along Old Alameda Creek while driving the property, or may operate a small boat in the ponds or walk on the levees past the allowed driving access end points (non-graveled roads). We recommend hunters bring small boats to access blinds in the ponds or to access the sloughs and bay within the hunt area.

What species can be hunted and when?

Hunting for all species other than waterfowl is prohibited at ELER. Waterfowl species commonly seen in the area include mallard, Northern shoveler and pintail, ruddy duck, canvasback, widgeon, gadwall, scaup and Canada goose, among many others. Only waterfowl species including ducks and geese as specified in the regulations may be hunted on specified hunt dates.

Can I hunt other species, such as upland game on Eden Landing Ecological Reserve?

No, you may only hunt waterfowl. Upland game or other species may not be hunted. Waterfowl hunting is the only legal hunting on ELER. The area is also managed for several sensitive waterbird species and habitats. Waterfowl hunting is the only use consistent with the goals of the ELER, and other hunting could result in disturbance to and take of sensitive species.

Where do I get permission to access ELER and how much does it cost?

Hunters are granted entry by checking in with DFG staff at the Veasy St. Check Station. There is no cost for the hunt, as long as the hunter has a valid license and stamps. A hunter may take a non-hunting guest. Junior hunters must possess a junior hunting license and must be accompanied by an adult.

Hunters must remove all decoys and other personal property (boats, motors, oars and other boating equipment) from ELER by one hour after shoot time ends. All trash, including shotshell hulls must be removed.

AREA RULES INCLUDE A 25-SHELL LIMIT IN POSSESSION

Title 14, California Code of Regulations, Section 630 (b)(42):

Eden Landing Ecological Reserve, Alameda Co.

(A) No person shall enter this reserve except on designated trails without written permission or by posted notice by the regional manager.

(B) No person shall walk, or ride horses or bicycles on roads except on designated trails.

(C) Dogs are restricted to designated trails, and designated hunting areas during the waterfowl season. Dogs must be on a leash at all times other than dogs used for hunting in designated hunting areas. In designated hunting areas, dogs may be off leash only for hunting during waterfowl season and must be under voice control at all times.

(D) Waterfowl hunting shall be permitted, but only at such times and in specific areas as designated by the department. Waterfowl shall be taken in accordance with the general waterfowl regulations.

(E) No plinking, firearms practice or target shooting is allowed within the ecological reserve.

(F) Fishing shall be permitted from boats and from shore, but only at such times and in specific areas as designated by the department.

(G) Notwithstanding the provisions of section (a) (2), commercial bait fishing for brine shrimp may occur only at such times and in specific areas as designated by the department.

(H) Notwithstanding the provisions of subsections (a) (1), (2), (3), (5), (6), (8), (10), (12), and (20), the department may issue permits to conduct biological research or monitoring compatible with the primary purposes of the reserve.

For additional information, please contact the reserve manager:

John Krause, Associate Wildlife Biologist, (415) 454-8050 or jkrause@dfg.ca.gov